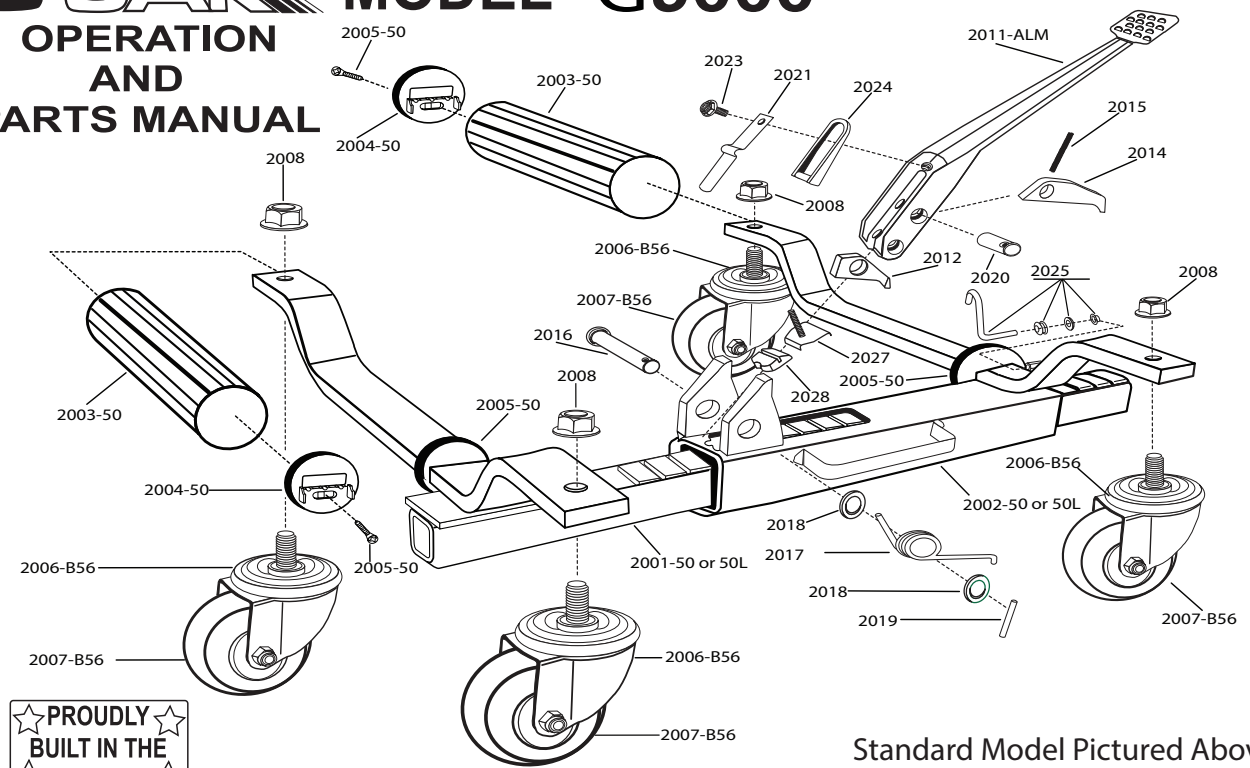




GOJAK MODEL G5000

OPERATION AND PARTS MANUAL



★ PROUDLY BUILT IN THE U.S.A. ★

Standard Model Pictured Above
Please specify STANDARD or Left Model When Ordering

PLACE STAMP HERE



C/O



American Tool Builders

4 Larson Drive Danbury, CT 06810 • U.S.A.

G5000 (Aluminium Pedal)								
Part #	Qty	Description	Part #	Qty	Description	Part #	Qty	Description
2001-50	1	Inner Ratchet & Axle Assembly	2011-ALM	1	Pedal (Aluminum)	2020	1	Upper Pivot Shaft
2001-50L	-	Inner Ratchet & Axle Assembly (Left Unit Only)	2012	1	Locking Pawl	2021	1	Upper Flat Spring
2002-50	1	Outer Body & Axle Assembly	2014	1	Working Pawl	2023	1	5/16"-18 x 7/8" Hex Self Tapping Screw
2002-50L	-	Outer Body & Axle Assembly (Left Unit Only)	2015-S	1	Working Pawl Spring	2024	1	Directional Lever
2003-50	2	Roller 2" (High Impact PVC)	2016	1	Lower Pivot Shaft	2025	1	Pedal Lock Assembly
2004-50	4	Roller Raceway (Nylon)	2017	1	Torsion Spring (Black)	2025-L	-	Pedal Lock Assembly (Left Unit Only)
2005-50	4	Raceway Cap Screw	2017-L	-	Torsion Spring (Left Unit Only)	2027	1	End Stop Clip & Spring
2006-B56	4	4" Caster Assembly - Black Ring (1st Gen)	2018	2	Washer	2028	1	End Stop
2008	4	Locknut (Compatible w/3" & 4" Caster)	2019	1	Coddner Pin	-	-	-
-	-	-	-	-	-	-	-	-



ZENDEX
TOOL CORPORATION
American Tool Builders
4 Larson Drive • Danbury, CT 06810 • U.S.A.
Phone: 1-800-446-5257 / 203-778-0400
Fax: 203-778-0036 E-Mail: INFO@zendextool.com
Visit Our Web Site at www.zendextool.com

GOJAK and The Faster Caster System are Registered Trademarks of Zendex Tool Corporation. ©2006 Zendex Tool Corporation. All rights reserved. Specifications subject to change without notice. Instruction Part No. 4025

Congratulations: You have just purchased one of the most useful vehicle maneuvering tools available: GoJak[®] is quick and easy to use, and safe in operation if used in accordance with these instructions. Read all the instructions and warnings first before attempting to operate. Make sure all additional personnel who are to use GoJak[®] are familiarized with its operation.

IMPORTANT!
 READ AND UNDERSTAND THESE WARNINGS FIRST!

WARNING: *DO NOT* operate GoJak[®] on inclined surfaces. GoJaks[®] must be used on level surfaces only. Unanticipated motion will occur as soon as GoJak[®] lifts tire from surface.

WARNING: *DO NOT* start the vehicle's engine, or drive with GoJaks[®] in use. GoJaks[®] are designed for hand maneuvering of vehicles only.

WARNING: *DO NOT* attempt to push GoJaks[®] over obstacles; they are designed to be used on level and reasonably smooth surfaces only.

WARNING: *DO NOT* use GoJaks[®] to lift tires wider than the rating that appears below and on the warning label on the unit. Model 5000 tire width is 9 inches.

WARNING: *DO NOT* neglect regular lubrication requirements as outlined in the lubrication instruction section. Without proper lubrication, it is possible that internal scarring of the telescoping components may occur. This could lead to binding and unanticipated release of GoJak[®].

WARNING: *DO NOT* overload GoJak[®] beyond the load rating: Model 5000 is 1,250 Lbs.; 567 Kg. This rating is per unit.

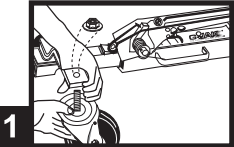
**OBSERVE THESE WARNINGS AT ALL TIMES.
 LACK OF REGULAR LUBRICATION, OVER LOADING, AND
 MISUSE CAN BE DANGEROUS AND DAMAGE TO GOJAKS FROM
 THE ABOVE MISUSE MAY VOID THE WARRANTY.**

LUBRICATION INSTRUCTIONS: LUBRICATE WEEKLY

1. Liberally coat toothed shaft with standard bearing grease (both sides and bottom only - do not lubricate teeth).
2. Lubricate pivot pins and mechanism with SAE 30 weight motor oil, or light machine oil.
3. Turn GoJak[®] over and lubricate ball bearing raceways on casters with SAE 30 weight motor oil or light machine oil. (Axle bearings are permanently lubricated at the factory, and do not require lubrication.
4. **Do Not lubricate raceways on Model 5000!** This model uses a self lubricating raceway, and reduced raceway life may occur when continually subjected to certain petroleum products.

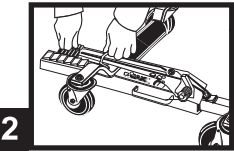
CASTER ASSEMBLY INSTRUCTIONS

1. REMOVE CASTERS FROM PLASTIC BAG AND INSERT STEM OF CASTER THROUGH AXLE HOLE. INSTALL LOCK NUTS. TIGHTEN NUTS TO APPROXIMATELY 80 FT. LBS. OF TORQUE.

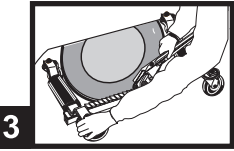


GOJAK OPERATING INSTRUCTIONS

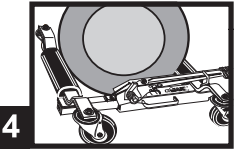
2 After casters are installed, you are now ready to operate GoJak[®]. Place GoJak[®] on floor and press down on pedal to release pedal lock. Place directional lever (U-shaped lever found on top of pedal) in it's lowered position. Depress pedal once again to release locking pawl and GoJak[®] will now open.



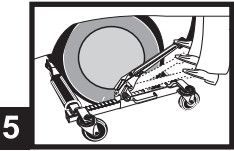
3 Expand GoJak[®] far enough to place around and position so both rollers now contact the tire tread. To obtain the best control of GoJak[®] while expanding around tire, place your left hand on top of the left side axle and your right hand at the center of the pedal, as shown in the diagram at the right.



4 Install GoJak[®] so that the unit is parallel to the sidewall of the tire to be lifted. Leave approximately 3/4" of clearance between tire and GoJak[®]. This is very important: if unit is misaligned, it is possible that the tire will be forced to hit the axle of the GoJak[®] and not the rollers, this may damage the GoJak[®] and void the warranty.



5 To lift the tire, flip directional lever up and place foot on pedal depressing with smooth, even strokes. Cycle pedal until tire is lifted from the surface one inch or less. After lifting, the lower tire is to the ground the more stable GoJak[®] will be. Repeat process on the other tires and maneuver the vehicle as required. To release GoJak[®], place directional lever in the down position and cycle the pedal until the rollers disengage from the tire. GoJak[®] may now be removed.



WARRANTY REGISTRATION CARD

MODEL 5000

Please return this warranty card for warranty and product update.

Purchased from _____ Date Purchased _____

Purchaser _____

Address _____

City _____ State _____ Zip _____

This GoJak[®] will be used for:
 (Check as many boxes as appropriate)

I first learned of GoJak[®] from:

- | | |
|---|---|
| <input type="checkbox"/> Vehicle maneuvering in showrooms. | <input type="checkbox"/> Magazine Advertisement.. |
| <input type="checkbox"/> Vehicle maneuvering in storage lots. | <input type="checkbox"/> Direct Mail Brochure. |
| <input type="checkbox"/> Vehicle maneuvering in parking lots/garages. | <input type="checkbox"/> Convention or Trade Show Exhibit. |
| <input type="checkbox"/> Vehicle maneuvering mechanical repairs. | <input type="checkbox"/> Postcard Pack. |
| <input type="checkbox"/> Vehicle maneuvering body repairs. | <input type="checkbox"/> Jobber Recommendation. |
| <input type="checkbox"/> Vehicle maneuvering during tire/wheel repairs. | <input type="checkbox"/> Distributor Recommendation |
| <input type="checkbox"/> Loading of spray or brake booths. | <input type="checkbox"/> Recommendation from a friend/business associate. |
| <input type="checkbox"/> Other | |

PLEASE CHECK QUANTITY PURCHASED - CHECK ONE BOX ONLY! COVERS 1 UNIT COVERS 2 UNITS

Zendex products are warranted to be free of defects in material or workmanship under normal use for one year from date of sale to user.

Any Zendex product or component claimed to be defective during warranty period must be returned to your local Zendex jobber or distributor for inspection; transportation charges prepaid. The product must be properly tagged, stating nature of defect; customer's name, address, and date of purchase. Your local Zendex jobber will direct warranty claim to Zendex Tool Corporation.

Any product or component determined defective by Zendex Tool Corporation, due to normal use will be repaired or replaced free of charge during warranty period and returned prepaid.

Warranty is void if equipment has been subjected to neglect, misuse, lack of proper lubrication, careless operation, faulty or deficient service, or if alterations or repairs have been made by other than an authorized representative, exclusive of normal maintenance.

The foregoing warranties are exclusive and are in lieu of all other warranties, (whether written, oral, or implied) including warranty of merchantability in other respects than expressly set forth above and warranty of fitness for a particular purpose.

Acknowledged,

GOJAK co Zendex Tool Corporation
 4 Larson Drive, Danbury, CT 06810

Signature _____ Date _____